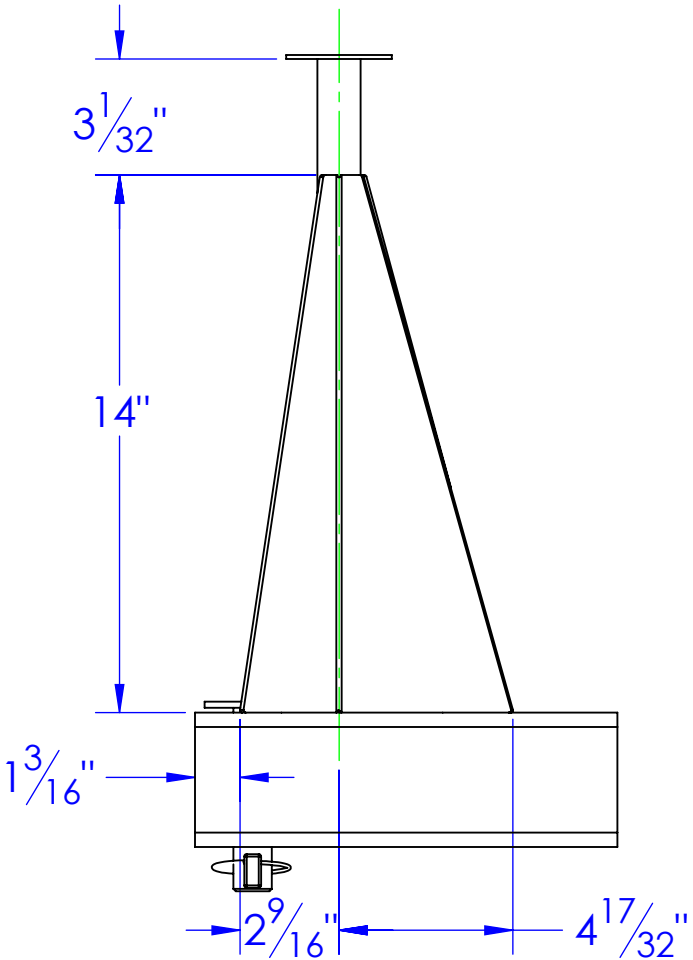
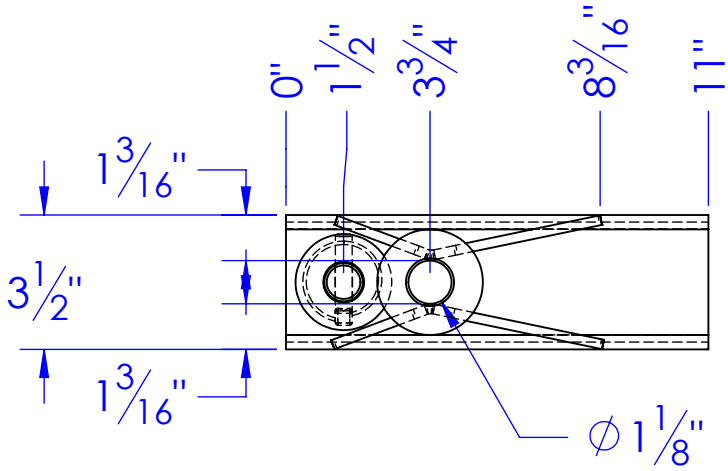
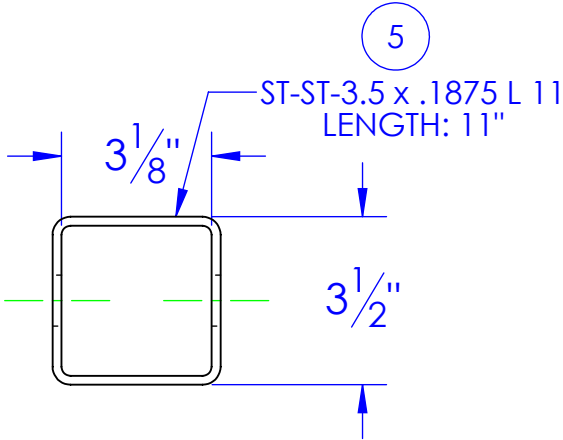
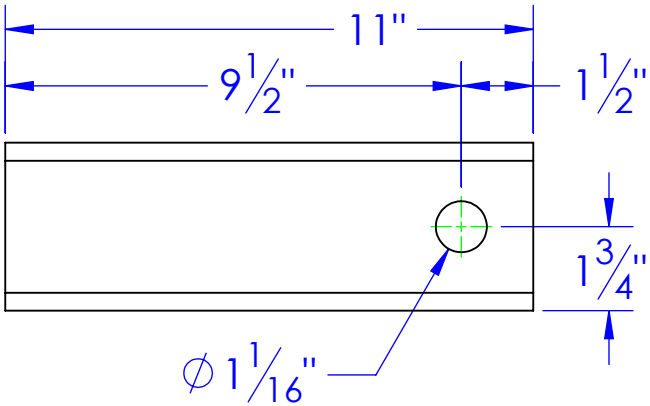
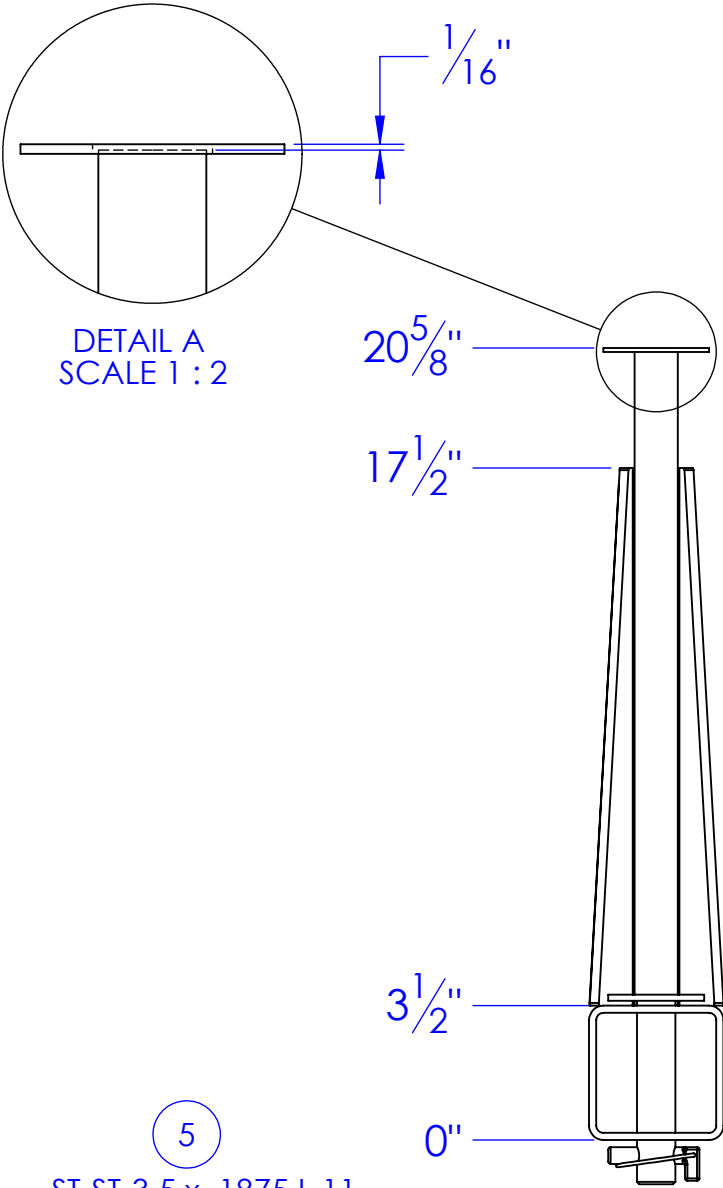
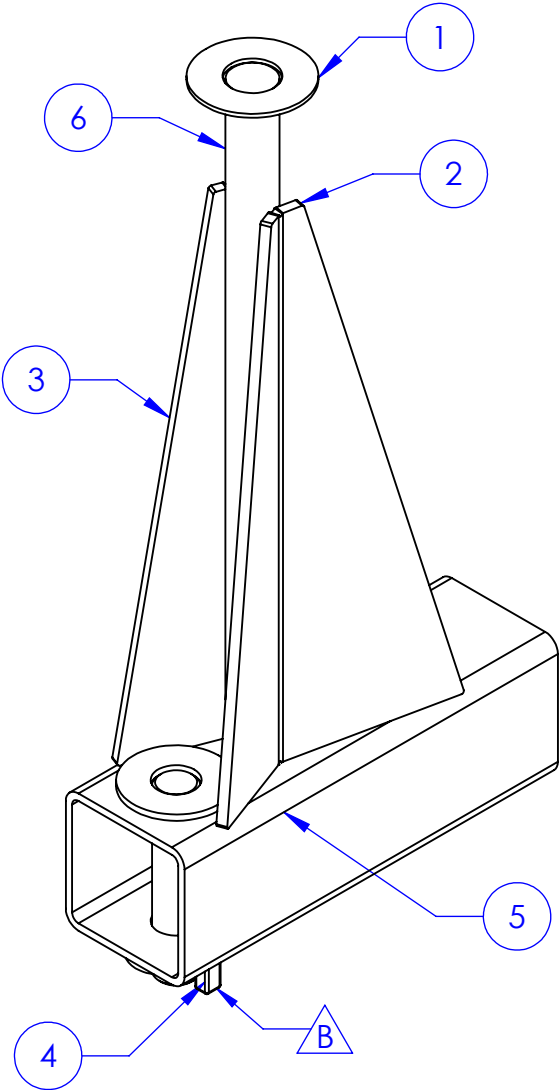


| ITEM NO. | PART NUMBER | DESCRIPTION | DRAWING # | QTY. |
|----------|------------------------------|--|-----------|------|
| 1 | BO-1.125 FW | FLAT WASHER 1" | STOCK | 1 |
| 2 | FP-HFLP-HD-ST1 | LIFT PIN HEAVY DUTY STIFFENER RIGHT SIDE | 30-2423 | 1 |
| 3 | FP-HFLP-HD-ST2 | LIFT PIN HEAVY DUTY STIFFENER LEFT SIDE | 30-2424 | 1 |
| 4 | RE-PN-C1x475 | PIN, CON, 4-7/8" | 10-1707 | 1 |
| 5 | ST-ST-3.5 x .1875 L 11 | LENGTH: 11" | STOCK | 1 |
| 6 | STC-CR 1.125x4142. L 17.0625 | LENGTH: 17-1/16" | 30-1401 | 1 |

| REV. | REVISIONS DESCRIPTION | DATE | APPROVED |
|------|--|------------|----------|
| B | UPDATED PIN TO RE-PN-C1x475 FROM RAW MATERIALS | 11/30/2012 | |

REQD QTY: 2



PROPRIETARY AND CONFIDENTIAL
THE INFORMATION CONTAINED IN THIS DRAWING IS THE SOLE PROPERTY OF <INSERT COMPANY NAME HERE>. ANY REPRODUCTION IN PART OR AS A WHOLE WITHOUT THE WRITTEN PERMISSION OF <INSERT COMPANY NAME HERE> IS PROHIBITED.

UNLESS OTHERWISE SPECIFIED:
DIMENSIONS ARE IN INCHES
TOLERANCES:
FRACTIONAL $\pm 1/16$
ANGULAR: MACH ± 1 BEND \pm
TWO PLACE DECIMAL ± 0.10
THREE PLACE DECIMAL ± 0.05
MATERIAL
DO NOT SCALE DRAWING

| | | | | |
|---------------------|----------------|------------|--|--------------|
| DRAWN | NAME | DATE | P.O. BOX 248, SABETHA KS. 66534 (785) 284-3674 FAX (785) 284-3931 | |
| PART # | HEATH | 11/30/2012 | TRIPLE C INC. | |
| ASM # | HF-HFLP-HD-100 | | | |
| COMMENTS: | | | SIZE | REV |
| 100 HF HD LIFT PINS | | | B | B |
| | | | DWG. NO. | |
| | | | 30-1401 B | |
| | | | SCALE: 1:5 | SHEET 1 OF 1 |
| | | | WEIGHT: 21.82 | |